

The background of the slide features a dark purple gradient. On the right side, there is a glowing, translucent graphic of a DNA double helix. Overlaid on and around the DNA is a complex network of white lines and dots, resembling a molecular structure or a data network. The lines form a mesh-like pattern, with dots acting as nodes or vertices.

**excelra**

The Bioinformatics™  
**POWERHOUSE**

# Data for life

Bio-IT for drug development

# Traditional drug discovery timelines and costs are no longer sustainable

Data needs a new lease of life. Life sciences companies have pressure mounting on all sides – regulatory oversight, stakeholder requirements, market demands, and investor expectations. The choice is clear: reimagine, revolutionize, or retire.

Smart businesses realize that data holds the key to continued success. They're maximizing their potential by using data to make better, faster, and more efficient decisions. Decisions that lead to the true objective: better outcomes for patients.

Excelra helps you accelerate your journey towards a digitized, data-driven enterprise. We build end-to-end digital solutions that harness the power of emerging technologies, cloud engineering, and DevOps to transform drug development. Our experience working with 16 of the top 20 pharmaceutical and biotech companies has refined our expertise in delivering tomorrow's technology solutions, today.



## Collaborate. Corroborate. Visualize.

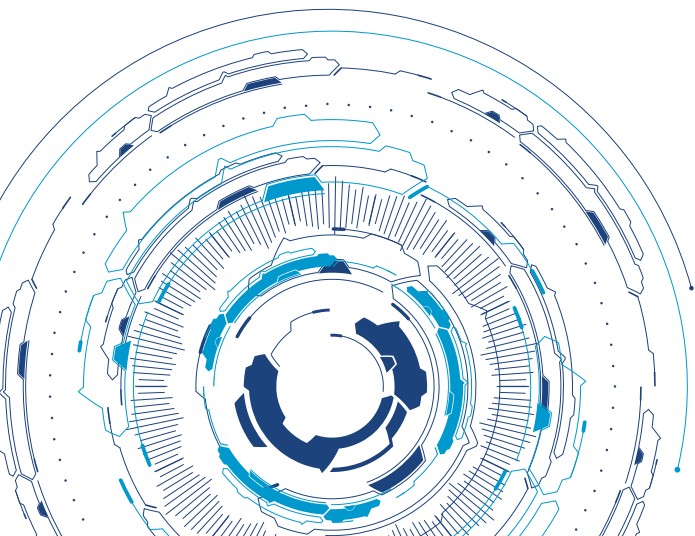
Transform your workplace with powerful tools that help bench scientists accelerate their day-to-day activities. Excelra provides modular, scalable, cross-platform solutions that integrate seamlessly within existing IT environments. Our digital transformation solutions for pharma and biotech enterprises include:

**Workspace collaborator** helps your teams share, collaborate, and co-operate, reducing rework and improving operational efficacy.

**Workflow management** gives you the edge with efficiencies driven by automation and digitization.

**Biomedical data aggregators** provision the data required to support discovery, design, and development.

**Compound registration platforms** streamline registration processes and reduce the risk of errors and redundancy.





## Innovate. Expand. Scale-up.

Our partners leverage the transformative nature of cloud technology, enabling powerful analytics, shorter innovation cycles, and standardized processes across global operations. We help you set up your data platforms, whether you choose a specific service provider or a hybrid approach. Our solutions unlock business innovation through improvements in automation, scalability, resilience, and data analytics.

### Our solutions include:

Helping our partners seamlessly **migrate data and applications** from on-premises to cloud, or from one service provider to another.

Data environments developed for early R&D and pre-clinical needs e.g., setting up **IT infrastructure** required to **manage and process OMICS data analysis workloads**.

**Setting up cloud-based data infrastructure** for bioinformatics teams based on industry best practices.

**Engineering privacy policy management frameworks** to help monitor access and security of sensitive data.



## Organize. Transform. Enable.

Competitive differentiation is essential for pharmaceutical companies. You need a strategic partnership that allows you to extract the maximum value from data: the new lifeblood of your organization. We help you configure data platforms, customize workflows, and develop the applications and tools you need to exploit new opportunities from the vast amounts of data you already have. We also help you discover and leverage data from public sources to benchmark your analyses. Our scientific informatics consulting expertise helps to bridge the gap between business challenges and solutions.

### Our support includes:

#### Cloud data engineering:

50%-80% of your time is spent wrangling data to make it analysis-ready. We help you manage data operations, running automated data pipelines through various ETL technologies.

#### Custom data lake / warehouses:

We help federate large and heterogenous volumes of data by applying data frameworks to centralize data availability and management.

#### Data visualization:

We help you gain deeper insights into data by bringing it to life for multiple audiences in your organization, accelerating go/no-go decisions.

#### ELN/LIMS services:

Our comprehensive software solutions for managing and automating laboratory processes optimize operations from sample management to data analysis.

Where data means more

excelra

The Bioinformatics<sup>TM</sup>  
**POWERHOUSE**

<https://bioinformaticspowerhouse.com/>

**Our partners:**



Google Cloud  
**Partner**



Microsoft  
**Partner**

Gold application integration  
Silver application development

Connect with our experts: [marketing@excelra.com](mailto:marketing@excelra.com)  
[www.excelra.com](http://www.excelra.com)